

OPEN THE DOOR TO HIGH  
QUALITY TEACHER  
PROFESSIONAL LEARNING

## KEY INFORMATION



### MASTER OF EDUCATION 2024-2025



St Mary's  
University College  
Belfast  
A College of Queen's University





# GENERAL INFORMATION

The contribution of St Mary's to Teacher Professional Learning consists of a range of accredited modules that may be taken on a stand-alone basis or that may contribute to one of the following awards:

- Postgraduate Certificate in Education Studies (PgCert)
- Postgraduate Diploma in Education Studies (PgDip)
- Master of Education (MEd)



## Entrance Requirements

Candidates for admission to the MEd programme in Education should normally hold either:

- (a) Qualified teacher status and an honours degree or equivalent qualification or
- (b) An honours degree or equivalent qualification with at least two years' professional experience in an educational, training or professionally related context.

## Application Procedure

Application for a part-time MEd course can be made online at <https://bit.ly/44wDuoJ>.

Application forms for entry to the MEd programme should be submitted to the Academic Registry Office no later than two weeks prior to the commencement of a course.

Late applications will be considered subject to the availability of places.

Existing MEd students can make upcoming module choices here <https://forms.office.com/e/KKmmU3KQXv>

## Postgraduate Tuition Fee Loan

Students starting a postgraduate course are able to apply for a Postgraduate Tuition Fee Loan (PG TFL) of up to £5,500.00. The PG TFL is non-means tested and is paid directly to the Higher Education provider.

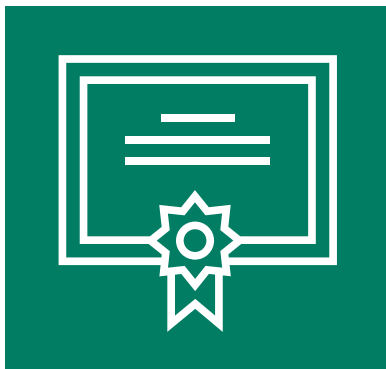
For further information please contact the College Finance Office, telephone **028 9026 8234**.

## Finance

Students wishing to complete a course do so on a self-funding basis, although financial support may be sought from a Board of Governors. In the academic year 2024-2025 the following fees will apply:

M-Level points 2024-2025	Fee
10	£406
20	£811
30	£1,217
60	£2,434
Bridging application fee	£48
Bridging assignment fee	£190





# M-LEVEL ACCREDITED COURSES

## Postgraduate Certificate in Education Studies

The Postgraduate Certificate is awarded to those students who have accumulated 60 MEd credit points. The course may be completed over one academic year, or students may build up the required number of modules over a period of up to five years. Students can select modules from any option listed in this booklet.

## Postgraduate Diploma in Education Studies

The Postgraduate Diploma is awarded to those students who have accumulated 120 MEd credit points. Students may build up the required number of modules for a period of up to five years. In order to obtain a named Postgraduate Diploma in a specialist option, students must take a minimum of two modules within the selected option.

## Master of Education

The MEd is awarded to those students who have accumulated 180 MEd credit points which include a 15,000-20,000-word dissertation. The dissertation is equivalent to 60 MEd credit points. Students may build up the required number of taught modules and complete the dissertation over a period of up to five years.

In order to obtain a Masters degree in a specialist option, students must take a minimum of two modules within the option, an Educational Research Methods module, and one other module of their choice, as well as complete an MEd dissertation worth 60 MEd credit points.

## MEd/PG DIPLOMA SPECIALIST OPTIONS

Specialist options apply to the Master of Education and Postgraduate Diploma courses only. For the purpose of continuity, students are advised to take a specialist option. The research module is compulsory for anyone wishing to undertake the MEd dissertation. To be awarded a named Masters degree, the dissertation must also be in the area of study of the specialist option. The remaining module(s), subject to availability and timetable restrictions, may be chosen from the full range of modules detailed in the prospectus.

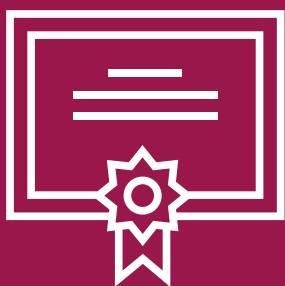
Students should note that not every module will be available every year within a course of study.

The following is a list of specialist options:

- Curriculum Development and Primary Education
- Developing Physical Education, School Sport and Coaching Science
- Early Years Education
- Effective Teaching
- English and Literacy in the Curriculum
- Irish and Irish-Medium Education
- Leadership in Catholic Schools
- Leadership for Learning
- Pastoral Issues
- Special Education

For further information please refer to:

<https://www.smucb.ac.uk/MPros/>



## SEMESTER ONE AND TWO MODULES

### 30-Point Modules



Semester One: Commencing September 2024	
<i>Saturdays (four Saturdays September – October 10:00am - 4:00pm)</i>	
<b>EDC7021</b>	Educational Research Methods
<b>EDC7053</b>	Personal Development: Promoting the Health and Well-Being of Teachers and Pupils
<b>EDC7082</b>	Music Therapy in Education
<b>EDC7087</b>	Autistic Voice and SEN Practice
<i>Wednesday (5:15pm - 7:15pm)</i>	
<b>EDC7075</b>	Cumais Uimhearthachta agus Litearthachta a Chur Chun Cinn i Suíomhanna Lán-Ghaeilge
<i>Online Learning</i>	
<b>EDC7052</b>	Issues in Curriculum: Improving Practice through Lesson Study
<b>EDC7069</b>	Pupil Learning through Physical Education and School Sport

Semester Two: Commencing January 2025	
<i>Saturdays (four Saturdays January – February, 10:00am - 4:00pm)</i>	
<b>EDC7007</b>	Current Issues in the Teaching of Literacy
<b>EDC7077</b>	Building Capacity in Schools: Advancing Inclusivity to Raise Pupil Outcomes
<b>EDC7078</b>	Current Issues and Future Directions in Physical Education and School Sport
<b>EDC7085</b>	Understanding and Supporting Autistic Children and Young People in Education
<i>Wednesday Evenings (5:15pm - 7:15pm)</i>	
<b>EDC7041</b>	Children and Young People in Crisis: Pastoral Responses
<b>EDC7088</b>	Sainchúrsa Gaeilge do mhúinteoirí: eolas agus inniúlacht
<i>Online Learning</i>	
<b>EDC7021</b>	Educational Research Methods



# SUMMER SCHOOL

## July 2024 and July 2025

### Summer School: July 2024

#### 30-Point Modules

Monday 1st July - Friday 5th July (10.00am - 4.00pm)

EDC7006	Principles into Practice in the Early Years
EDC7012	Behaviour Issues in the Context of Special Educational Needs
EDC7015	Leaders in Catholic Schools
EDC7059	Contemporary Leadership Issues for the Effective School
EDC7070	Developing Coaching Science and Physical Education in Schools
EDC7079	Understanding, Supporting and Teaching Pupils with Specific Literacy Difficulties
EDC7081	Putting the Sting into STEM (a thematic approach)
EDC7089	Art for Wellbeing in Schools

#### 10-Point Module

Monday 1st July - Tuesday 2nd July (10.00am - 4.00pm)

EDC7043	Saibhreas agus Cruinneas na Gaeilge
---------	-------------------------------------

### Summer School: July 2025

#### 30-Point Modules

Tuesday 1st July - Monday 7th July (10.00am - 4.00pm)

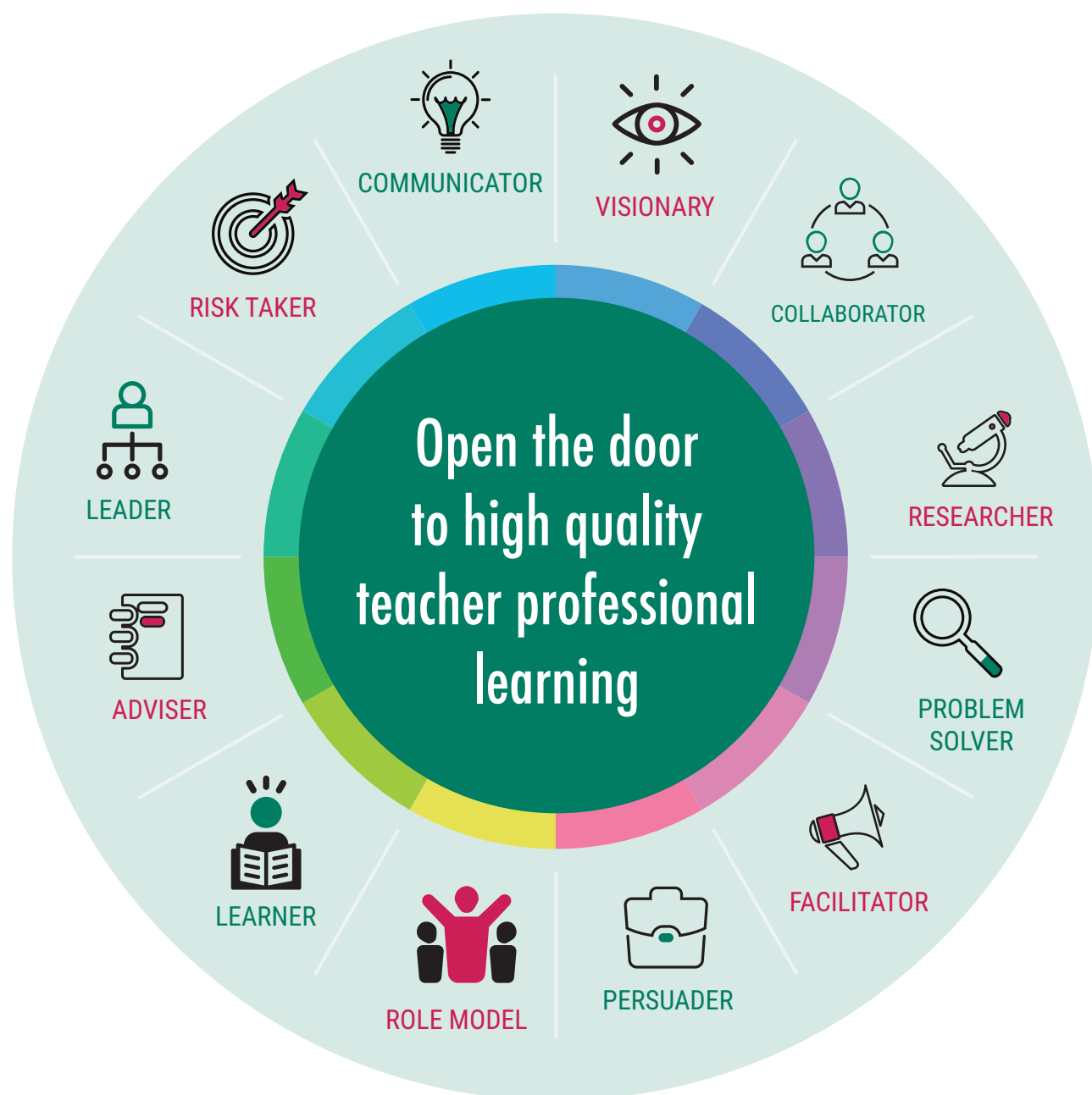
EDC7004	Approaches to Education in the Early Years
EDC7012	Behaviour Issues in the Context of Special Educational Needs
EDC7013	Contemporary Leadership Issues for the Effective School
EDC7015	Leaders in Catholic Schools
EDC7070	Developing Coaching Science and Physical Education in Schools
EDC7079	Understanding, Supporting and Teaching Pupils with Specific Literacy Difficulties
EDC7081	Putting the Sting into STEM (a thematic approach)
EDC7089	Art for Wellbeing in Schools

#### 20-Point Module

Tuesday 1st July to Thursday 3rd July

EDC7076	Gaeilge na Gaeltachta
---------	-----------------------

# MED PROGRAMME - BUILD ON YOUR STRENGTHS AS A TEACHER



**Figure 1: Build on your Strengths as a Teacher**

Adapted from, Department of Education for Northern Ireland (DENI) (2017)  
*Learning Leaders: A Strategy for Teacher Professional Development*, Belfast, DENI.



# INFORMATION FOR APPLICANTS

St Mary's University College  
Belfast has made all reasonable  
efforts to ensure that the  
information in this guide is  
accurate and up to date when  
compiled.

**Published by St Mary's  
University College ©2024.**

